

F
B U I L D
T U R E S
I N G
E
S

www.buildingfutures.org.uk
www.myspace.com/building_futures
or search 'Building Futures' on Facebook

BDP 10 December 2008

This House Believes Globalisation is **BAD** for Architecture

MACDONALD COMPANY
The Property Recruitment Professionals

Homes
& Property
Evening Standard

BDP.

Robert Wade
LSE

1. The 'Great Divergence' after Industrial Rev.

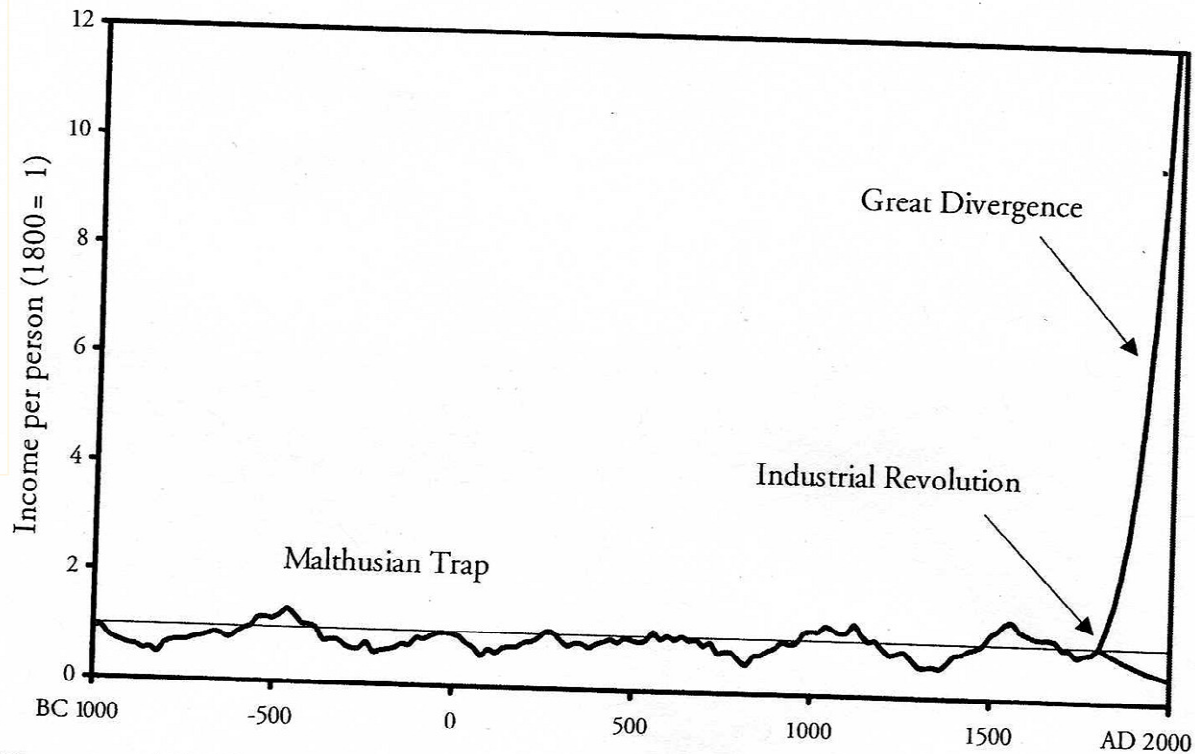


Figure 1.1 World economic history in one picture. Incomes rose sharply in many countries after 1800 but declined in others.

'International' (between-country) income distribution, 2000

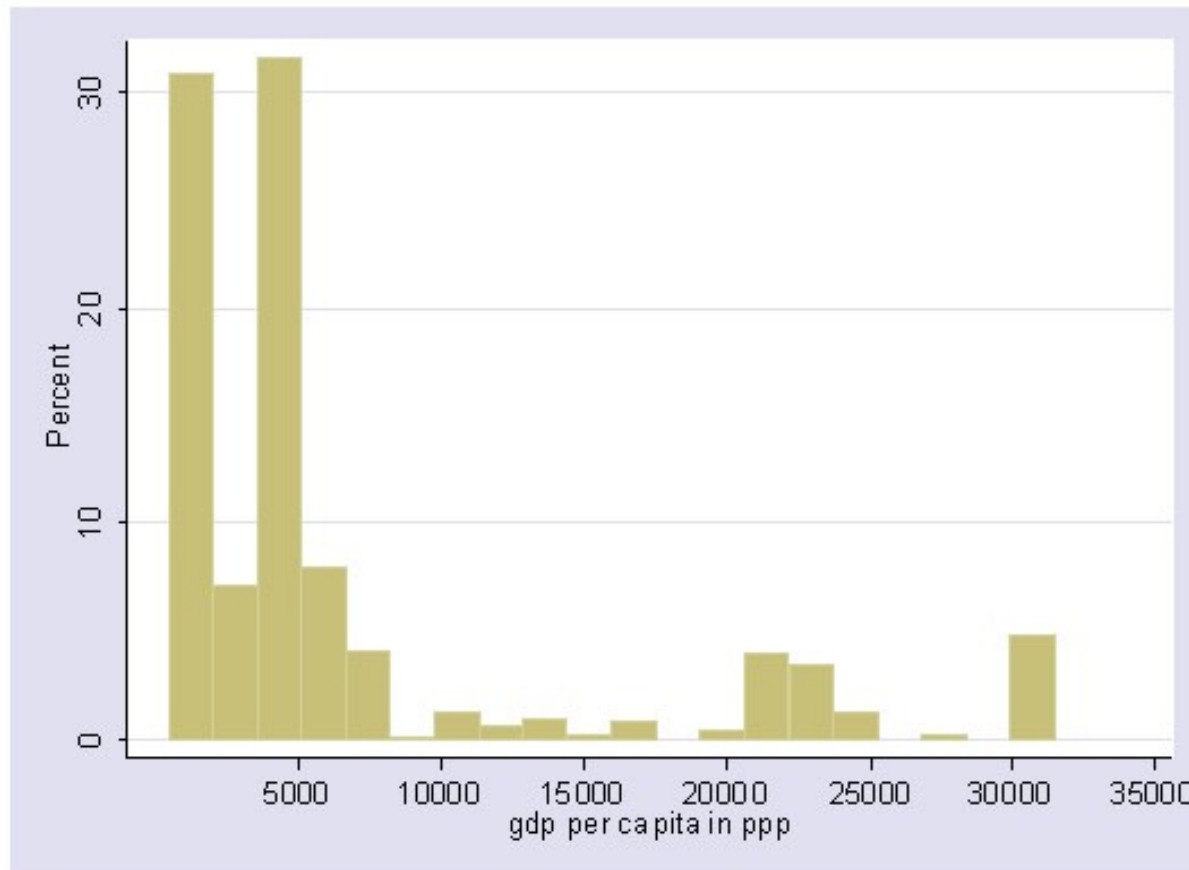


Figure 3: Income per head as percentage of North

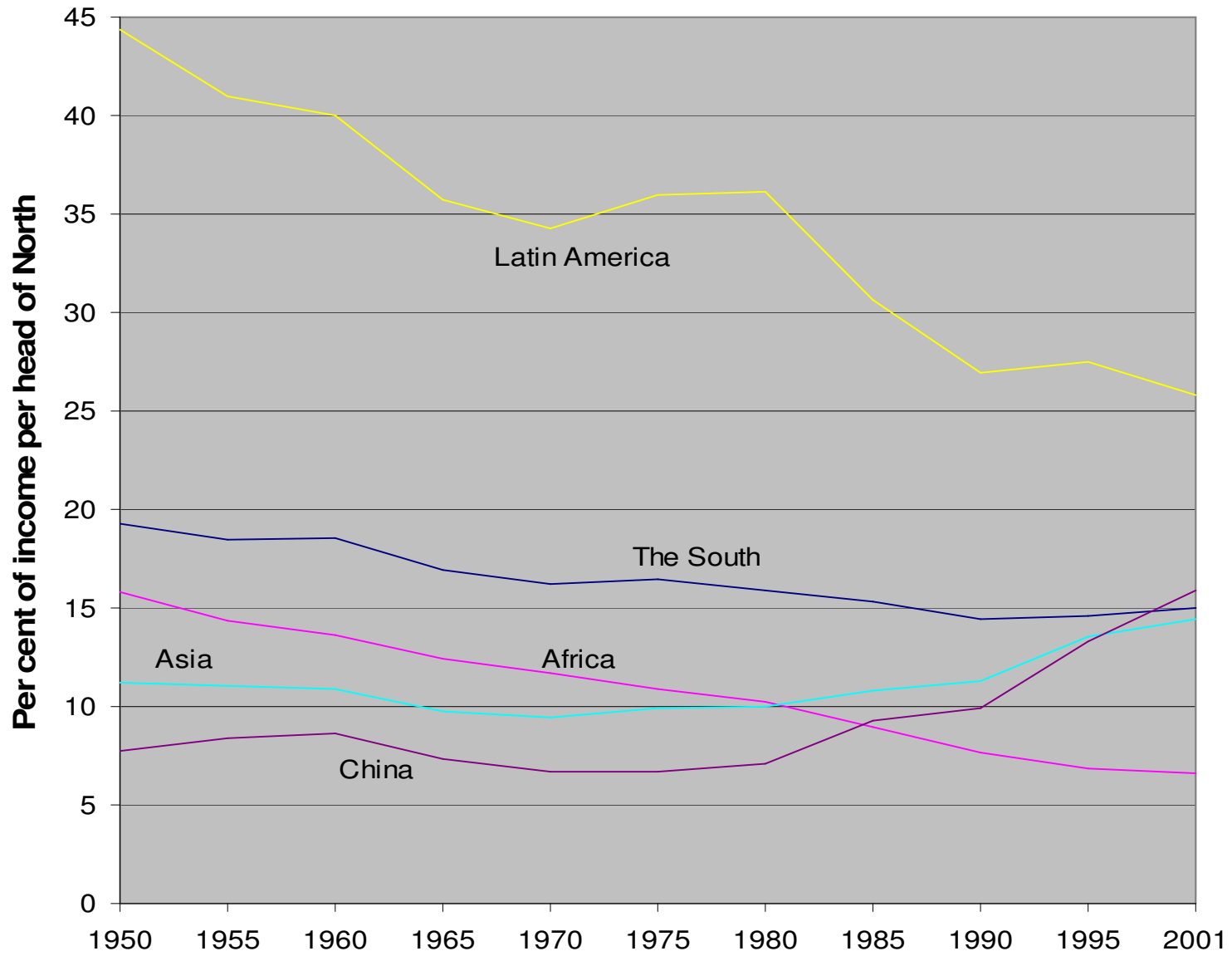


Chart 2: World inequality using PPP (low = less equal)

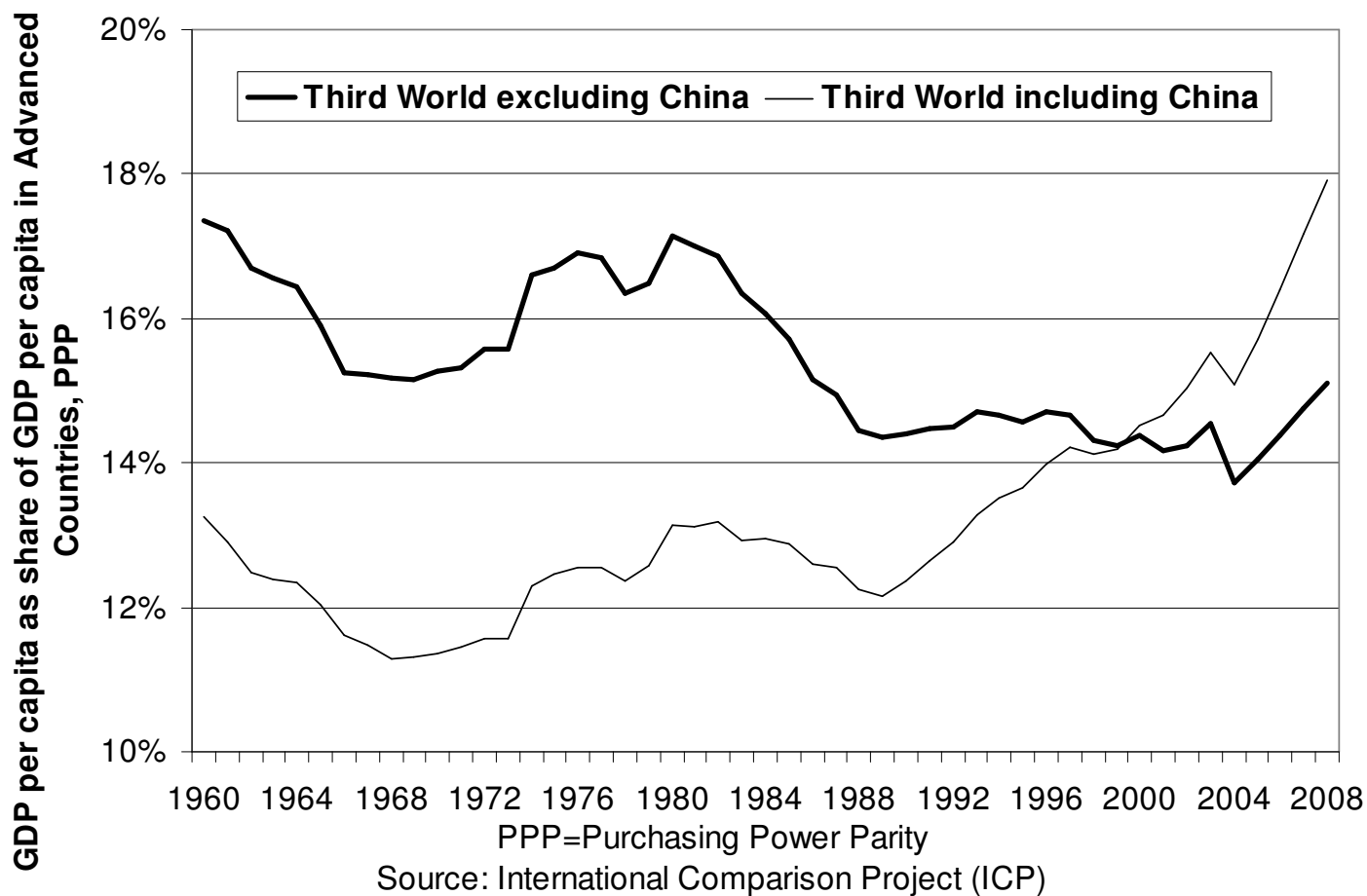
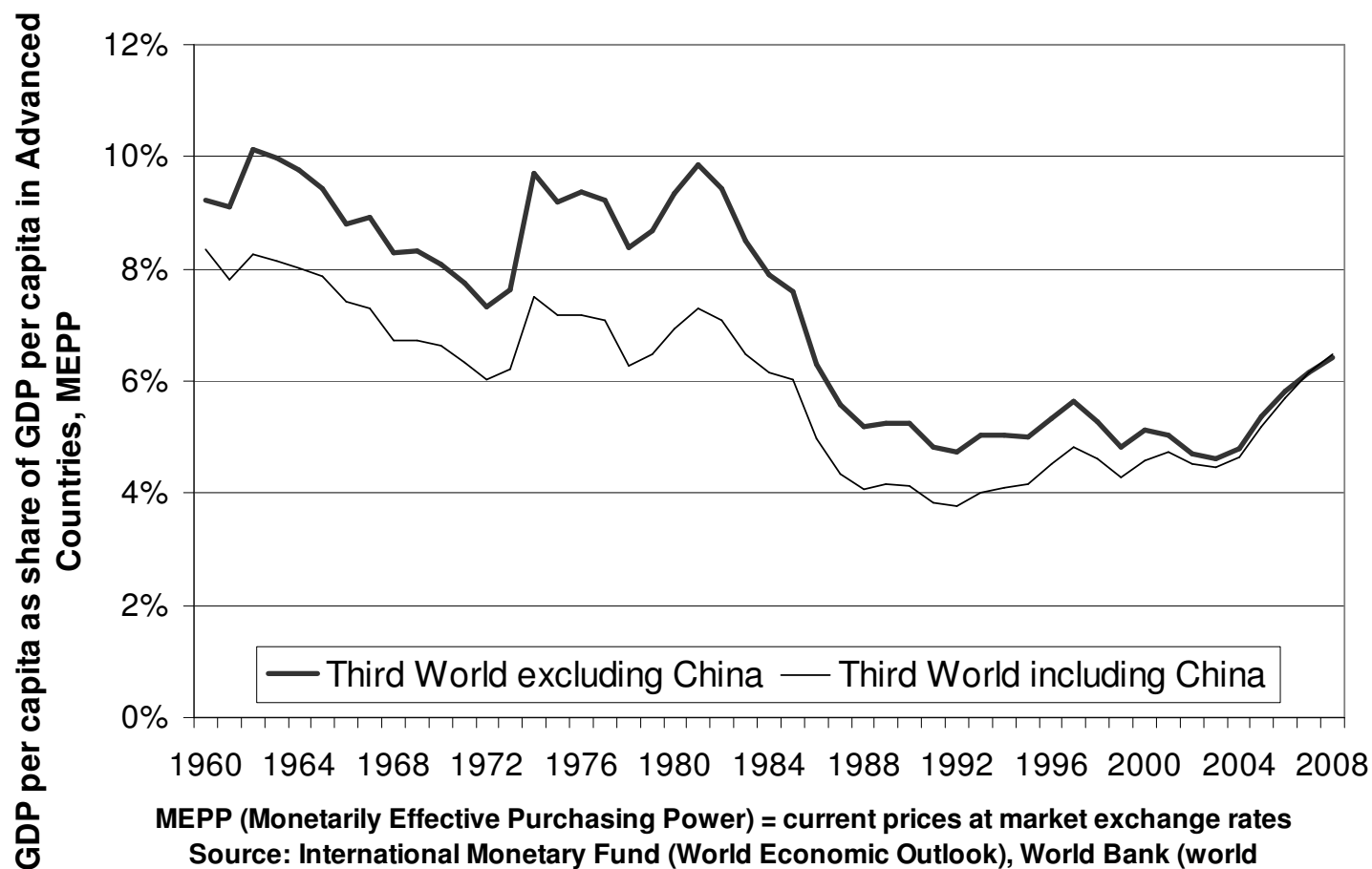


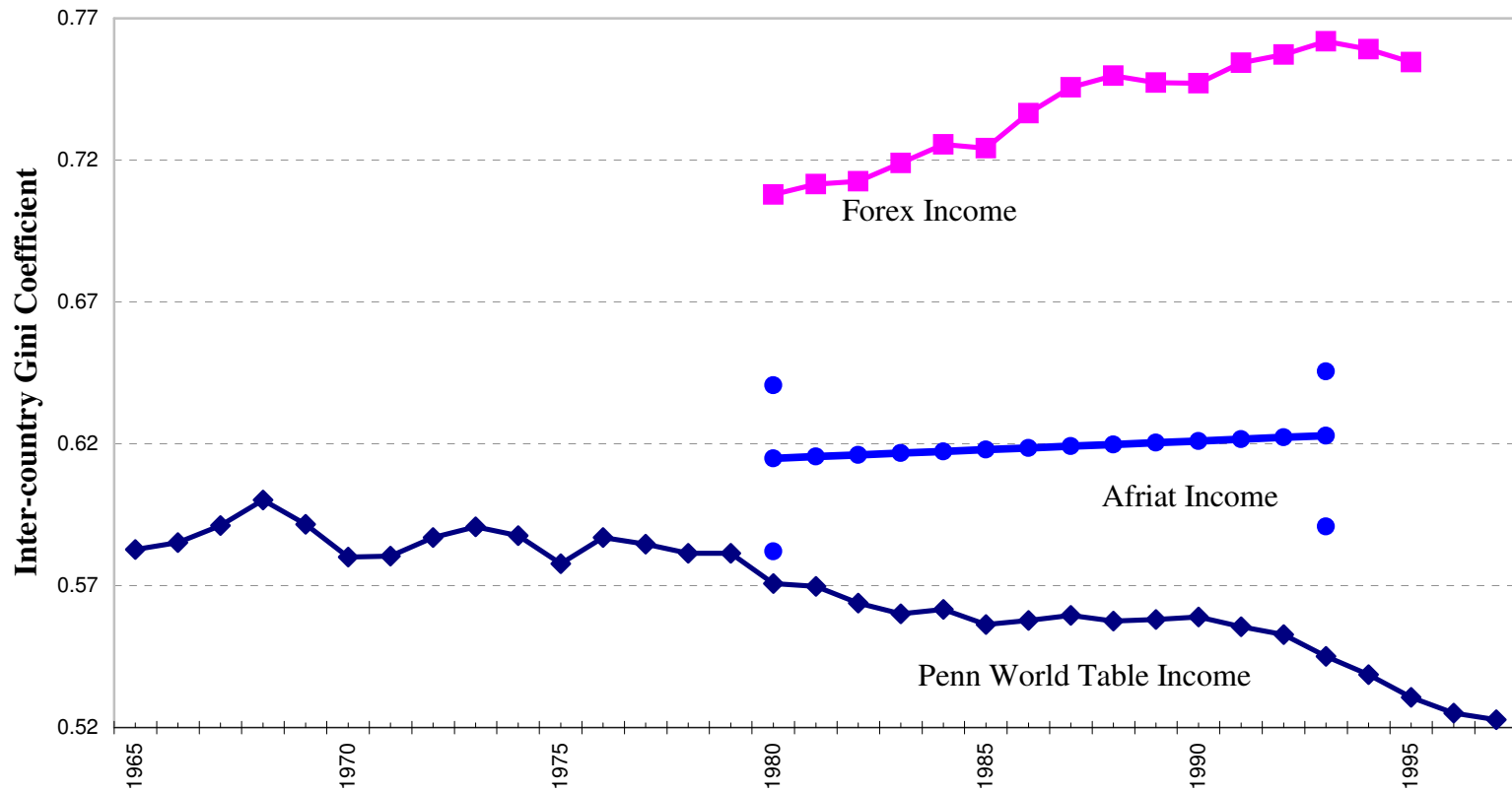
Chart 1: World inequality (low = less equal)



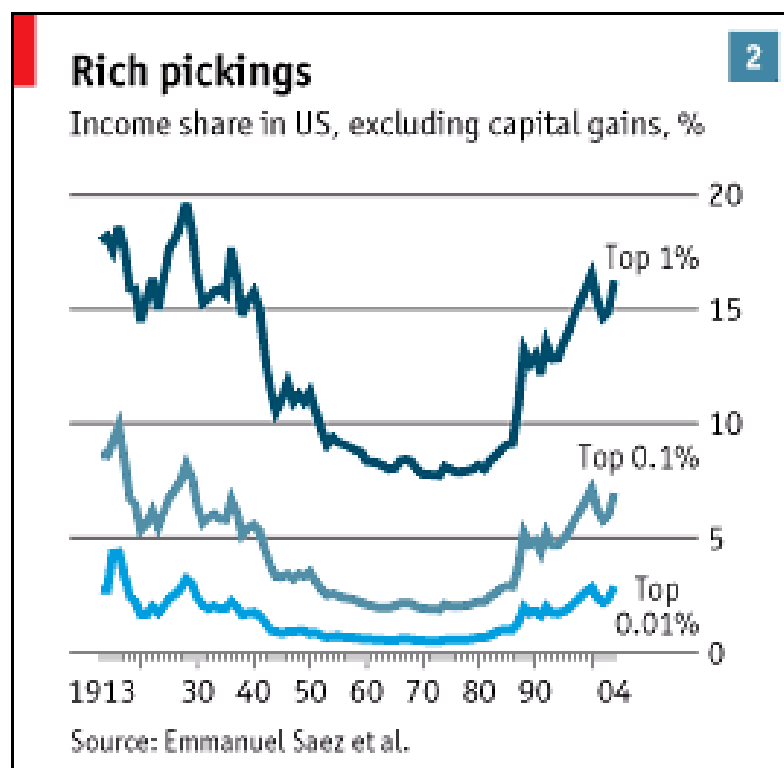
STATE MOBILITY MATRIX, 1978-2000 (rounded %)

	Increase	No change	Decrease
Rich	--	80	20
Contender	15	5	80
Third World	10	30	65
Fourth World	5	95	--

Figure 5: Three sources of data on inter-country income distribution, Gini, 1980-97



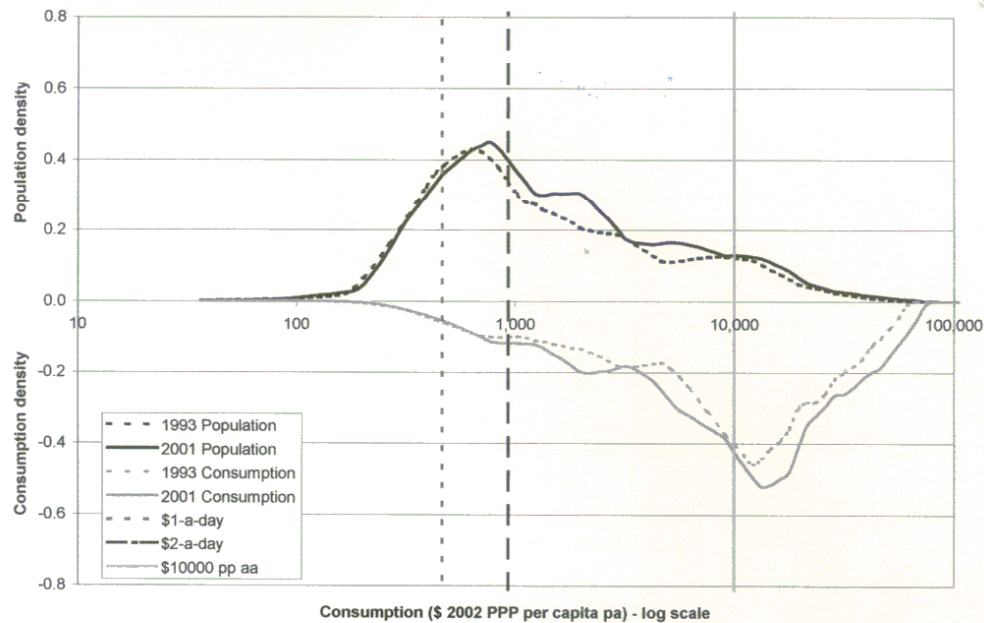
Share of top 0.01%, 0.1%, 1% in household income, US, 1913-2004



WORLD CONSUMPTION DISTRIBUTION, 1993, 2001

Figure 1: Consumption density curves.

Figure 1.1: World (151 countries)



Growth in GDPPC, 1913-50, 1950-73, 1973-98

	1913 - 50	1950 - 73	1973 - 98
World	0.9	2.9	1.3
W. Europe	0.8	4.1	1.8
W. Offshoots	1.6	2.4	1.9
Jpn	0.9	8.1	2.3
E.E/FUSSR	1.5	3.5	- 1.1
L. America	1.4	2.5	1.0
Asia (exc. Jpn)	0.0	2.9	3.5
Africa	0.9	2.9	1.3

World Bank poverty headcounts

	\$1 / DAY			\$ 2 / DAY	
	# of people (bn)	% world popn	% dev'ing ctry popn	# of people (bn)	% world popn
1981	1.5	33	40	2.4	67
2001	1.1	18	21	2.7	53